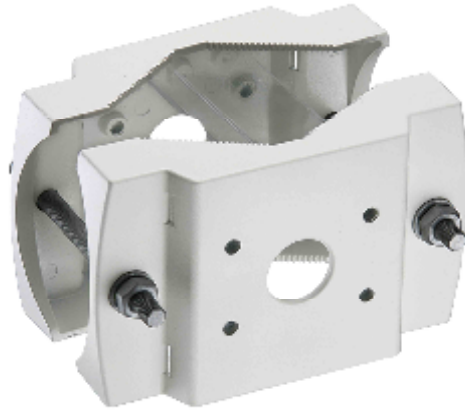


CI-808 Pole Mount Bracket



Specifications	Item NO.	CI-808 Pole Mount Bracket	
	Construction	Die Cast Al-alloy Material	
	Bracket Dimensions	182 L x 45 H x 114 W mm	
	Coating	Beige and white epoxy powder coating	
	Max Load.	20 KG	
	Packing	18 pcs / ctn	
	Weight	1.2 KG	
	Application Use	For Pole	
	Fit for different type of camera housing bracket		
	With Stainless tube thread and screws		
Suitable for poles with diameter 50 mm to 130 mm			
Certification	RoHS Compliant	CE	